

GLOBAL RETURNS PROJECT

Support high-impact
climate charities

Year ended
31 March 2024

IMPACT REPORT

Charity number 1186683. Registered in England and Wales. Company number 11882899



TABLE OF CONTENTS

Executive Summary

- 3** Performance statement from our climate scientists
- 4** Selection and assessment methodology
- 5** Update on our methodology
- 7** Latest performance figures

Real impact for the planet

Success stories from our charities

- 8 – 9** Blue Marine Foundation
- 10 – 11** ClientEarth
- 12 – 13** Global Canopy
- 14 – 15** Rainforest Trust
- 16 – 17** Trillion Trees
- 18 – 19** Whale and Dolphin Conservation

Join our community

- 20** Events and opportunities for supporters

PERFORMANCE STATEMENT

Over the past six months, two types of activity offer particular insight into our charities' impressive ability to deliver impact.

First, our charities remain committed to *expansion*: growing their proven models for tackling the Climate Crisis.

In February, for example, the Government of the South Georgia and the South Sandwich Islands added 166,000 km² to the Blue Belt Programme of marine protected areas. **Blue Marine Foundation** has played a vital role in establishing and expanding the Blue Belt, which now covers 4.5 million km² of ocean (read more on page 8).

On land, **Rainforest Trust** continues to add to its 50 million acres of protected ecosystems around the world. In 2024, for example, it has helped conserve over 180,000 acres of mangrove forest along the Amazon Estuary in Brazil (read more on page 15).

Global Canopy is expanding the reach of data tools which target the market forces destroying nature. Its ENCORE platform is now used by over 6,000 users including the Philippines Central Bank, the EU and the Bank of England (read more on page 13).

Second, our charities focus on *permanence*: they ensure that their impacts last.

For example, **Whale and Dolphin Conservation** recently finalised monitoring agreements with local conservation groups and researchers for three

Important Marine Mammal Areas (IMMAs) in Peru, Malaysia and Kenya (read more on page 18).

Winning legal battles against polluters and greenwashers allows **ClientEarth** to establish stronger precedents for climate accountability. Its March 2024 victory against the airline KLM, for example, set an important and authoritative precedent for companies which engage in greenwashing (read more on page 10).

Trillion Trees ensures that the forests it restores stand the test of time by working with local landowners. Its restoration of over 50 hectares of the Atlantic Forest has been driven by agroforestry approaches with smallholder farmers, providing technical capacity assistance and education opportunities to support long-lasting success (read more on page 17).

Over the past year, the Global Returns Project raised £388,000 for high-impact climate charities. That is *more than double* what we raised in our previous financial year. To-date, our total raised for best-in-class climate charities is over £850,000.

Thank you to the many donors who have made this progress possible. You are funding climate solutions that are delivering expanding and resilient climate impacts. We invite you to read more about the successes you are delivering in the rest of this Impact Report.



Prof Joanna Haigh
CBE FRS (Chair)



Prof Yadvinder Malhi CBE FRS



Dr Mamta Mehra



Prof Ros Rickaby FRS

METHODOLOGY

Drawing on our team of world-class climate scientists, we have developed a proprietary methodology for selecting and assessing some of the best climate charities.

Selecting, assessing and monitoring best-in-class climate charities takes time and expertise. That is why we have a Due Diligence Committee – comprised of our Trustees and Technical Advisory Board – that seeks a diversity of solutions, activities, beneficiaries and geographies for our portfolio of charities.

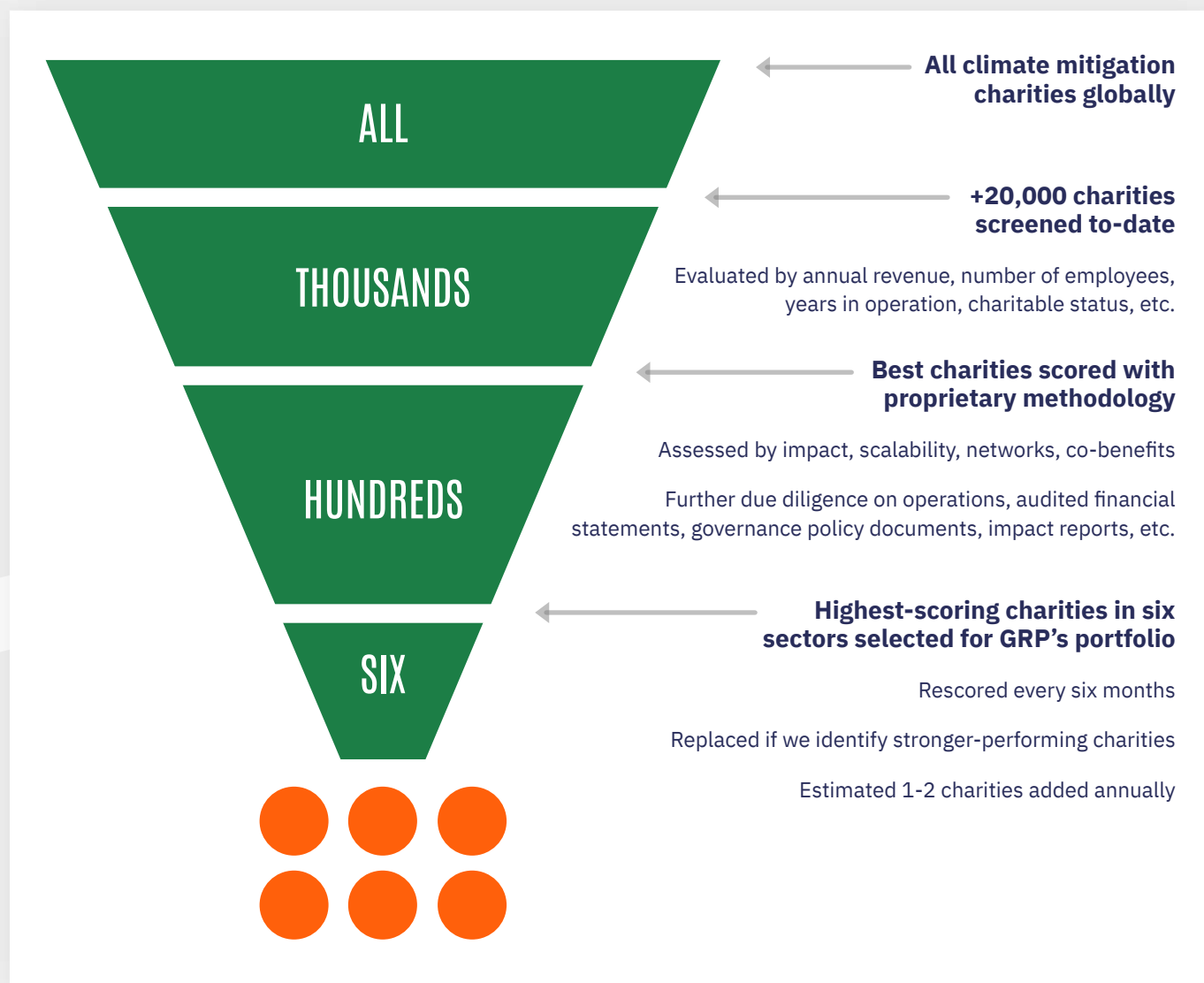
After passing a series of governance and sizing gates, organisations considered for our portfolio are assessed according to:

**Impact
Networks**

**Scalability
Co-benefits**

Only the highest scoring organisations are admitted into the portfolio.

Once included in our portfolio, an organisation can be expected to remain for several years, but we continue to monitor them. We replace charities if we identify organisations performing even more strongly.



UPDATES TO OUR METHODOLOGY

As part of the Global Returns Project's six-monthly assessments, we map each of our charities onto a **Total Opportunity Set** of climate actions. According to research conducted in conjunction with our experts, this set represents the total universe of activities that can be undertaken by charitable organisations to mitigate climate change and reverse biodiversity loss.

Our **Portfolio Diversity** is the aggregated percentage of all the actions our charities engage in as a proportion of the Total Opportunity Set.

This mode of assessment helps ensure our portfolio delivers diversified impacts across a wide array of climate actions.

However, science is never static. To prevent our Total Opportunity Set from becoming outdated, we have begun a series of annual reviews to this element of our methodology, overseen by our experts. We have also adjusted our process of calculating Portfolio Diversity to make it more

amenable to adding or subtracting climate actions during these annual reviews.

Recent updates to the Total Opportunity Set include an increase in ocean and water-based climate actions informed by the Intergovernmental Panel on Climate Change's Special Report on the Ocean and Cryosphere and wider scientific literature.

We have also paid special attention to actions which recognise the salience of individual behaviour on climate change. Frameworks such as the Inner Development Goals indicate that climate action will continue to struggle without significant changes in individual value sets and culture. With this in mind, actions have been added which focus on the tackling of climate mis- and dis-information.

To ensure we only compare 'like with like', our Impact Reports going forward will differentiate between Portfolio Diversity and Global Returns Rate scores calculated prior to April 2024 and those calculated from April 2024 onward.



Daniel Appiah
Reporting and Research Manager



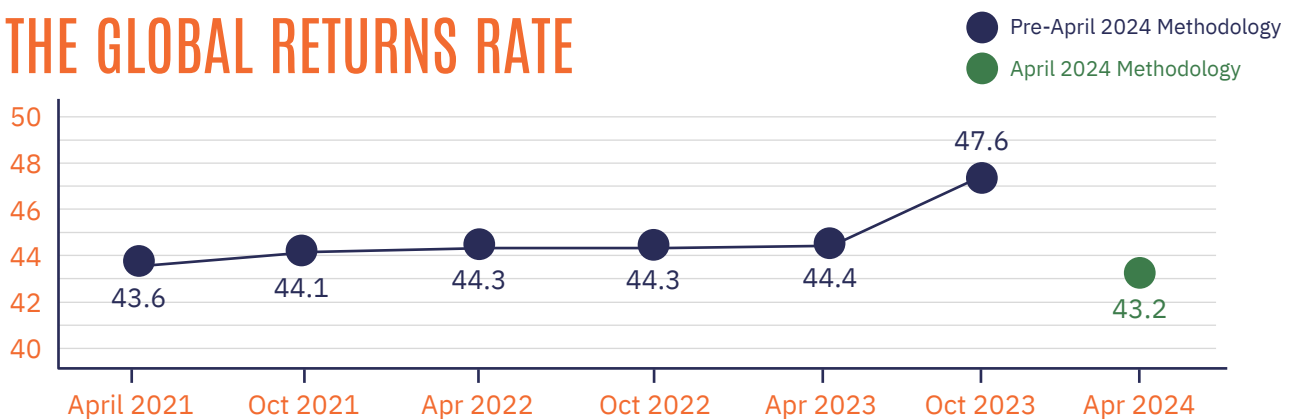
PERFORMANCE

Our Global Returns Rate and Portfolio Diversity scores summarise our portfolio's overall charitable 'performance' – its impact and reach.

Working with our team of scientists, we have mapped out the universe of potential areas of intervention that charities can undertake to help tackle the Climate Crisis. **Portfolio Diversity** measures the total range of activities carried out by our portfolio charities as a percentage of that full universe.

We calculate the **Global Returns Rate** (GRR) by first scoring each portfolio charity in four key areas: impact, scalability, networks and co-benefits. We then incorporate Portfolio Diversity into the average score to produce our final GRR figure.

THE GLOBAL RETURNS RATE



THE GLOBAL RETURNS RATE



PORTFOLIO DIVERSITY



See page 5 for a statement from our Reporting and Research Manager on recent updates to our methodology for calculating Portfolio Diversity and the Global Returns Rate.







BLUE MARINE FOUNDATION

Blue Marine aims to safeguard the world's oceans from pollution and habitat destruction by ensuring effective protection for 30 percent of the world's oceans by 2030.



AREAS OF ACTIVITY

-  Reducing emission sources
-  **Supporting carbon sinks**
-  Protecting life on land
-  **Protecting life below water**

Expanding the Blue Belt in British Overseas Territories

The “Blue Belt” binds the UK’s overseas territories. It is the UK Government’s flagship international marine conservation initiative, launched in 2016 after campaigning by Blue Marine Foundation and other partners. It has supported the creation of Marine Protected Areas (MPAs) in ten Overseas Territories, protecting over 4.3 million km² of ocean – more than 20 times the size of Great Britain and spanning the Pacific, Indian, Atlantic and Southern Oceans and the Caribbean. Blue Marine has been part of the Great Blue Ocean Coalition of organisations which has brought about a dramatic expansion in Blue Belt coverage. In February 2024, the Government of South Georgia and the South Sandwich Islands (SGSSI) announced it will

put an additional 166,000 km² of ocean under full protection – an area greater than the size of England. The further protection of SGSSI is an important addition to the world-class Blue Belt Programme. Protecting these waters under law, rather than via fisheries regulations, is a significant enhancement to the protection of these vital waters, which contain the ‘Humpback Highway’, an internationally recognised migratory route for whales traveling from South America to feed in the waters around SGSSI.

Since 2010, the UK Government has been working with local communities, governments, and conservationists such as Blue Marine to create some of the world’s largest MPAs. Combined, their marine zones now cover 4.5 million km² – or 1% – of the global ocean.

15,000

m² of oyster reef habitat created

64

new evidence submissions to support ocean protection and restoration, and equitable use of the sea

166,000

km² of ocean added to Blue Belt Programme

860,000

km² of seagrass beds under restoration or increased protection

Biodiversity Boost in Dominican Republic's Silver Bank

In February, Blue Marine took part in an expedition to the Silver Bank in the Dominican Republic where a consortium of partners (Blue Marine, partners from the Dominican Republic Ministry of Environment, Bering Yachts, Mission Blue, and SeaLegacy) conducted 6 environmental DNA (eDNA) water sampling tests to assess the biodiversity of the region.

The eDNA sampling process involved collecting seawater samples from different locations around the Silver Bank and bringing them back onboard the expedition vessel. The eDNA samples were analysed to detect and identify DNA traces of fish, mammals, and invertebrates present at the various sampling locations. This eDNA-based research approach allowed

for a comprehensive assessment of the biodiversity in the Silver Bank region, including species that are rare, elusive or challenging to detect through traditional survey methods.

The results of the eDNA analysis were shared with representatives from the Dominican Republic's environment ministry and Blue Marine's project partners, providing valuable insights into the ecosystem complexity and biodiversity composition of the Silver Bank and contributing to a better understanding of this unique marine environment and key nursery for humpback whales. This data contributed to the Dominican Republic Government's announcement that it will protect 30% of its territorial waters, including the establishment of an MPA along its maritime border with Colombia.

TIMELINE

July 2023

Advancing science for marine conservation

Blue Marine and partners united to study the Erimitis marine environment in the Ionian sea, emphasising its ecological value.

October 2023

Watershed moment for Jersey's marine spatial plan.

Blue Marine's advocacy influenced the Government of Jersey's unveiling of a marine spatial plan proposing new MPAs.

December 2023

Signs of recovery in the Dogger bank

In 2022, Blue Marine ensured the Dogger Bank was protected from trawling and dredging. Blue Marine's co-founder Charles Clover took a boat to inspect the vast MPA and found signs of significant recovery in a busy seascape.

February 2024

Report published to protect seagrass meadows

Poor water quality jeopardises seagrass meadows' role as carbon sinks. On World Seagrass Day, Blue Marine, Project Seagrass, and Surfers against Sewage published a report highlighting the UK water quality crisis's impact on fighting climate change.



Pictured above: Greece project manager Angela Lazou out on the boat with small-scale fishers in Amorgos, Greece. Credit: Giorgos Moutafis

FUTURE PLANS

Blue Marine Foundation has outlined several core objectives for the future covering its 4 core areas of operation:

1. Securing effective protection of the ocean.
2. Tackling overfishing, overexploitation and other damaging activities.
3. Supporting low-impact fishing and equitable use of the sea.
4. Restoring vital ecosystems.

The objectives include ensuring the effective protection of at least 30% of the ocean by 2030, contributing to achieving *full* protection for at least 10% of the ocean and protecting the high seas by creating MPAs.

ClientEarth[®]

ClientEarth is a team of lawyers ensuring existing environmental laws are respected and helping governments develop effective environmental policies.



AREAS OF ACTIVITY

- ✓ Reducing emission sources
- Supporting carbon sinks
- ✓ Protecting life on land
- ✓ Protecting life below water

Historic win against greenwashing

In March 2024, ClientEarth celebrated a significant win when the District Court of Amsterdam ruled against airline KLM for greenwashing in its advertising. KLM's claims of having a 'net zero by 2050' goal and promotions for customers to 'offset' the climate impact of their flight were considered misleading and unlawful.

With support from ClientEarth, campaign groups Fossielvrij and Reclame Fossielvrij filed the claim in July 2022. The lawsuit targeted the aviation industry's greenwashing PR strategy – that of painting its business practice as tackling the Climate Crisis whilst actively doing the opposite.

In particular, the judgement focused on the sustainability claims for alternative aviation fuels, with

the court ruling that the term 'sustainable' may not be ascribed to KLM's use of these fuels given their small proportion of total fuel usage. Additionally, the court ruled that the airline's offsetting offer whereby customers can contribute money towards reforestation schemes was not sufficiently linked to the CO₂ emissions from its flights.

For these reasons, KLM were found to be in breach of the EU Unfair Commercial Practices Directive. KLM had already removed some of the advertising claims from its marketing materials prior to the judgement.

It is hoped that this ruling sets an important and authoritative precedent for the aviation industry as a whole, and for other companies which engage in greenwashing through advertising.

199

live litigation cases

45

vital projects focused on advocacy, capacity-building and campaigning, alongside litigation work

54

jurisdictions ClientEarth is operating in

900

law enforcement officers trained in the Philippines to uphold environmental regulations

Legal action ends immunity for illegal Romanian coal plants

In November 2023, Greenpeace Romania and ClientEarth achieved a significant victory for environmental protection and governance after a four-year legal battle against illegal coal pollution in Romania.

The EU's Industrial Emissions Directive (IED) is legislation which aims to control and limit what is emitted by industrial activities within the EU. Importantly, it emphasises the use of best available techniques to prevent and minimise pollution and aims to enforce common standards and requirements across the EU. This is achieved primarily through permits issued by national governments which specify emission limits and other conditions.

TIMELINE

July 2023

UK Government taken to court

ClientEarth, alongside Friends of the Earth and Good Law Project, took the UK Government to court for the second time in under two years over its inadequate climate action plans.

August 2023

UN issues warning to Saudi Aramco on climate impact

UN warned Saudi Aramco for driving climate-fuelled human rights violations after ClientEarth in London filed a legal complaint accusing Aramco of the largest ever climate-related breach of international human rights law by a business.

November 2023

Climate demands for next UK Government

ClientEarth published its UK Manifesto, outlining what it wants to see from the next UK Government.

February 2024

European Parliament Passes Nature Restoration Law after public pressure

The European Parliament sealed deal on the Nature Restoration Law, listening to calls from institutions such as BirdLife Europe, ClientEarth, EEB and WWF EU.

The complaint to the European Commission pertained to the Romanian government's 'piecemeal' pollution law which Greenpeace and ClientEarth claimed did not contain sufficient penalties for coal plants found to be in breach of the conditions of their permits, with almost half of coal plants in Romania found to be operating under no permit at all. This was a major long-term breach of the IED which ClientEarth has helped end.

In response, Romania has now implemented substantial reforms. Its new Industrial Emissions Law boosts fines in many cases to over ten times their previous level. The government has also introduced the possibility of criminal penalties for operators running activities without a permit and mandatory suspensions for certain illegal operations. Several coal plants that were specifically targeted by this legal action have now closed.



Pictured above: ClientEarth delegation advocating for Poland's first climate law.

FUTURE PLANS

ClientEarth's 2030 Global Impact Strategy focuses on transformative change in four human-created systems:

1. Legal systems and rule of law: Advocating for ambitious environmental and climate laws worldwide.
2. Economic systems: Pursuing corporate and financial laws that align with planetary boundaries and hold entities accountable for environmental harm.
3. Energy systems: Advocating for clean energy transitions in Europe and Asia.
4. Food, oceans, and land use: Strengthening laws to promote sustainable practices globally.

Global Canopy provides data, metrics and insights to companies, financial institutions and governments to help them make better decisions about nature, forests and people.



AREAS OF ACTIVITY

- ✓ Reducing emission sources
- Supporting carbon sinks
- ✓ Protecting life on land
- Protecting life below water

Lessons from a decade of game-changing climate impact data.

In February, Global Canopy celebrated a 'Decade of Deforestation Data' with the release of its 10th Forest 500 Annual Report which sets out 10 lessons for enabling and accelerating action on deforestation driven by the production and trade of certain agricultural products – the leading cause of tropical forest loss worldwide.

For the last decade, Global Canopy's Forest 500 project has gathered 1.3 million data points identifying and assessing the 350 companies and 150 financial institutions with the greatest exposure to, and influence over, tropical deforestation.

Each year, their assessments provide a clear and comprehensive picture on who is working to fix things

and who still has more to do to eliminate deforestation and associated human rights abuses in their supply chains and portfolios.

Forest 500's leading role as a trusted provider of open and transparent data can be seen through engagement with major influential institutions in the run up to and following the 10th report's launch. The institutions wanted to understand their assessment and learn more about Global Canopy's methodology.

With the UN 2025 deadline for eliminating commodity-driven deforestation and the 2030 deadline for halting and reversing all deforestation quickly approaching, this year's Forest 500 report makes a strong case for the need for regulation to drive meaningful progress for nature, forests and people.

338

financial institutions engage with the Global Canopy co-founded Taskforce for Nature-related Financial Disclosures (TNFD)

26

financial institutions used Trase data from Global Canopy in their decision-making process and frameworks

1,146

companies and financial institutions' performance on deforestation covered

1.3
MILLION

data points from Forest 500

Go-to platform for identifying nature-related impacts and nature dependencies

The ENCORE tool was developed by Global Canopy in partnership with UNEP-FI and UNEP-WCMC. It has become the go-to tool for the finance sector to identify material nature-related risks, impacts and dependencies. It has over 6,000 registered users including financial institutions and Central Banks. Important developments over the past year include:

- The Philippines Central Bank using ENCORE to assess the impact of biodiversity loss on the Philippine banking system.
- The European Union using ENCORE in its 'Developing a Supervisory Framework for Financial Risks Stemming from Biodiversity-related Losses' project which it will apply to the Hungarian financial system working with the Hungarian Central Bank.
- The Bank of England commissioning an analysis using the ENCORE tool of the materiality of nature-related financial risks and the potential financial impact of biodiversity loss and ecosystem degradation on UK businesses and financial institutions.

TIMELINE

June 2023

Trase paves way for EU deforestation regulation

EU deforestation regulation was enacted, backed by evidence from Trase: Global Canopy's supply chain data transparency initiative.

August 2023

Global Canopy data reveals Bolivian soy deforestation crisis

Trase's Bolivian soy data gained global attention exposing deforestation. A team travelled to Bolivia presenting the data and engaging stakeholders, including producers' associations and key finance sector players.

November 2023

Data platform tracks corporate deforestation.

Forest IQ, a data platform developed in partnership with The Zoological Society of London and SEI, was launched, offering financial institutions comprehensive insights on 2,000+ companies' deforestation, ecosystem conversion and human rights impacts.

February 2024

A decade of deforestation insights

Celebrating a decade of data, Forest 500 released its 10th annual report, outlining 10 lessons learned. The report's clear insights on deforestation in supply chains garnered global media coverage.



FUTURE PLANS

Global Canopy will continue to strive for the elimination and reversal of forest loss in supply chains. Through its tools, such as ENCORE, Forest IQ and capacity-building materials like TNFD-in-a-box and Deforestation-free Finance Guidance, Global Canopy will continue to enable progress.

Through its data such as Forest 500 and Deforestation Action Tracker, Global Canopy will continue to hold the most influential companies and financial institutions to ever higher standards. To have the greatest impact, Global Canopy will increase the reach and uptake of their tools.



RAINFOREST TRUST® ·UK·

Rainforest Trust places threatened rainforests under permanent protection through community engagement and local partnerships.



AREAS OF ACTIVITY

- Reducing emission sources
- Supporting carbon sinks
- Protecting life on land
- Protecting life below water

Expanding Santa Marta National Park

Situated within Colombia's Sierra Nevada de Santa Marta, characterised by its prominent snow-capped peaks descending nearly 19,000 feet to the Caribbean Sea, lies a region of significant ecological importance. Recognised for its high-integrity forests housing numerous endemic, migrant and endangered species, the area has served as a critical habitat for millennia. Indigenous communities, deeply entrenched in the spiritual and cultural significance of the land, have historically inhabited this biodiversity hotspot and play a significant role in its conservation.

In 2023, Rainforest Trust and Indigenous-led partner, Resguardo Kogui Malayo Arhuaco executed a notable conservation initiative, effectively safeguarding 426,154 acres of Indigenous territories. These acres were protected through the expansion of the Sierra Nevada de Santa Marta National Park, elevating their environmental protection status within Colombia. Noteworthy is the considerable quantity of carbon stored in the newly protected forests, estimated at 64,403,818 metric tonnes of CO₂ equivalents. Going forward, these territories will be co-managed with the National Park, ensuring the sustained preservation of its diverse ecosystems against potential exploitation.

50
MILLION

acres protected
across the globe
with Rainforest
Trust's support

144,433

acres of rainforest
protected by GRP
donors in the year
ended 31 March
2024

34.47
MILLION

metric tonnes of CO₂
equivalents stored
in the acres of
Rainforest protected
by GRP donors over
the past year

6,515,957

acres in progress in
the Brazilian
Amazon

Conserving Vital Mangroves in the Amazon Estuary

Located along the Brazilian coastline, the convergence point of the Amazon River and the Atlantic Ocean harbours one of the world's largest and most intact mangrove ecosystems. This vast estuary encompasses a significant portion (approximately 80%) of Brazil's mangroves, providing habitat for numerous threatened species. A significant gap in protections left the mangrove forest vulnerable to potential risks.

In 2024, Rainforest Trust, in collaboration with local partner RARE Brazil, successfully completed the

protection of over 180,000 acres of mangrove forest along the Amazon Estuary in Brazil. This initiative entailed the establishment of two new sustainable-use reserves, sanctioned by governmental decree, along with the expansion of an existing reserve. The strategic significance of this coastal habitat lies in its role as a critical refuge for marine and coastal species confronting extinction risks. Moreover, protecting the intact mangrove forest secures nearly 40 million tonnes of CO₂ equivalents stored, and ensures this ecosystem can continue sequestering carbon, thereby contributing significantly to climate mitigation efforts.

TIMELINE

April 2023

Indigenous territory protected from mining

In Colombia, Rainforest Trust and its Indigenous-led partner Resguardo Kogui Malayo Arhuaco protected 426,154 acres of Indigenous territories by expanding Sierra Nevada de Santa Marta National Park. These forests now enjoy maximum protection from mining threats.

May 2023

Large investment in community-centred conservation

Rainforest Trust committed \$3.5 million to the International Land Coalition network to power people-centred conservation.

October 2023

Protecting biodiversity hotspot in Indonesia

3,329 acres were protected in Indonesia's Leuser ecosystem with a further 1,217 underway. The Leuser Ecosystem is the last place on Earth where orangutans, rhinos, elephants and tigers coexist in the wild, spanning over 6 million acres.

March 2024

Safeguarding vital mangroves

Rainforest Trust and partner RARE Brazil completed the protection of over 180,000 acres of mangrove forest along the Amazon Estuary in Brazil — part of the largest, most intact contiguous belt of mangroves in the world.



Pictured above: Male Great Curassow. Credit: Andy Morffew

FUTURE PLANS

As of 30th June 2023, Rainforest Trust reached the half-way point of its 2021-25 strategic plan. The Rainforest Trust Strategic Plan Update Report outlines progress towards each of its goals, detailing achievements and areas needing attention. Of the 23 objectives, 15 are on track or ahead of schedule, including the goal to protect or be in the process of protecting 125 million acres of critical forest and sequestering 17.5 billion tonnes of carbon.

7 objectives, notably safeguarding 7% of all high-integrity tropical forests, lag behind. Challenges in the Brazilian Amazon hindered progress, but recent governmental shifts have enabled significant advancement. The upcoming year holds critical importance for furthering conservation efforts.



Trillion Trees is the united force of BirdLife International, Wildlife Conservation Society and WWF. Together they protect and restore forests all over the world – for the benefit of people, nature and the climate.



AREAS OF ACTIVITY

- Reducing emission sources
- Supporting carbon sinks
- Protecting life on land
- Protecting life below water

Leading natural forest restoration in Papua New Guinea

The Bisil Ku forests are in a remote part of the Papua New Guinea Highlands with limited infrastructure. The forest provides critical habitat for the endangered Goodfellow's Tree Kangaroo, the New Guinea Harpy Eagle, Boelen's Python, the Long-beaked Echidna, Dwarf Cassowary and at least 10 species of birds of paradise.

Tree planting at Bisil Ku is helping restore tree cover in deforested areas and enrich degraded forest with tree species of key importance for animal food, stabilising soil, ensuring clean water provision and enhancing socio-economic benefits to rural communities. The restoration project has a primary focus on native tree species (at least eight different native species are being planted), but some fruit trees are also being planted to

help provide food for 600 community members.

While large-scale industrial agriculture has not significantly penetrated the mountainous interior of Papua New Guinea, population growth is leading to the expansion of smallholder farming, resulting in gradual degradation of the hills.

Trillion Trees emphasises the crucial ecological importance of maintaining connectivity across the highlands for the long-term preservation of the region's biodiversity. However, very little of the existing forest land is formally protected, leaving the stewardship of Papua New Guinea's forests in the hands of rural communities on the forest frontier.

So far, 12,300 trees have been planted over 11 hectares, and another 9,000 are growing in nurseries newly built and managed by communities.

40

projects
worldwide, ready
to be implemented
with donor support

42,952

trees being grown
with GRP support so
far

10,700+

community
members
benefitting from
restoration projects
in 7 landscapes

285

hectares (400
football pitches)
restored

Restoring a UN World Restoration Flagship Landscape.

The Atlantic Forest used to be one of the world's largest forests, covering nearly 8% of South America. Now, only around 24% of it remains – making it the most threatened of all tropical forests. There are thousands of unique species, including around 8,000 plant species and 200 types of endemic birds.

WWF and BirdLife partner SAVE Brasil are working with local landowners to restore and reconnect vital habitat used by 20 endemic and endangered bird species and piloting agroforestry approaches with smallholder

farmers. They are providing technical capacity support and education opportunities to support long-term success of restoration efforts and using plant species that support agroforestry, all while restoring critical connectivity of forest needed for wildlife. With these actions, forest cover is rapidly increasing, further improving the quality of the land and providing resources for people and biodiversity.

Overall, the programme has restored over 50 hectares with 11 demonstrative plots with landowners (7 agroforestry, 4 ecological restoration). These represent more than 14,000 seedlings planted from 62 different species.

TIMELINE

June 2023

New guidance on environmental communications

Trillion Trees published new guidelines for communicating about ecosystem restoration geared towards corporates and setting out best communications practices.

August 2023

7th Annual Kaptagat Tree Planting Event

The event in Kenya was held with attendance of Kenya's President Ruto and supported by WWF-Kenya. Some of the indigenous seedlings sourced were from Trillion Trees-supported tree nurseries owned by communities living around the forest.

November 2023

Preparation for new project in Laos

In Nam et Phou Louey National Park, community consultations began prior to mapping restoration areas. WCS started designing the layout of sampling plots that will be used to track natural regeneration in restored sites.

December 2023

Road testing Forest Restoration Catalyst

Trillion Trees met with corporate and government stakeholders to road test their new program which will co-create initiatives with local communities, support pilot projects and ensure equitable benefit-sharing mechanisms.



Pictured above: Women and girls helping transport supplies. Credit: WCS Papua New Guinea

FUTURE PLANS

Trillion Trees backs community-based restoration projects through the ReForest Fund. To scale impact in the future, market-based finance is crucial. Trillion Trees aims to support this transition, fostering sustainable financial models across priority landscapes.

By 2030, Trillion Trees is aiming to support 20 landscape projects, co-create initiatives with communities, back pilot projects and ensure equitable benefit-sharing. Their objective is to catalyse 250,000 hectares of forest restoration, potentially unlocking £1 billion for environmental outcomes.

WDC { WHALE AND DOLPHIN CONSERVATION

Whale and Dolphin Conservation (WDC) protects whale populations: an underappreciated but important nature-based climate solution.



AREAS OF ACTIVITY

- Reducing emission sources
- Supporting carbon sinks
- Protecting life on land
- Protecting life below water

New IMMA Monitoring Agreements

Monitoring agreements were agreed by Whale and Dolphin Conservation with local conservation groups and researchers in December 2023 and January 2024 for three Important Marine Mammal Areas (IMMAs), in Peru, Malaysia and Kenya thanks to funding from the Global Returns Project in 2023.

Together, the Watamu-Malindi and Watamu Banks IMMA (Kenya), Satun-Langkawi Archipelago IMMA (Malaysia) and Central Humboldt Current Upwelling System IMMA (Peru) cover more than 290,000 km² of ocean. They also provide priceless habitat for seven species of great whale including the critically endangered southern right whale population in the south-east Pacific Ocean, IUCN-listed endangered sei and blue whales and vulnerable fin and sperm whales.

This is as well as numerous smaller cetacean species and other marine mammals such as seals and sea lions.

IMMAS are important areas of habitat used by whales and other marine mammals for foraging, reproduction, rearing young and as migration routes between habitats. They are places that scientists have agreed are important habitats for whales, dolphins and other marine mammals and are in need of special conservation protection measures. IMMAs aim to ensure that our enormous climate allies have safe spaces for feeding, resting and breeding without disturbance from human-generated threats such as noisy ships or getting caught in fishing nets. The monitoring will improve our understanding of the whales in these three areas as well as an assessment of their habitats and what threats they are facing.

3

new IMMAs with monitoring agreements in place through WDC in the last 6 months

292,671

km² of IMMAs with monitoring agreements

7

species of large whale whose habitat will be monitored through agreements with WDC

5

species of whale listed as vulnerable, endangered or critically endangered that monitoring of the 3 IMMAs will protect

Combatting entanglement

An average of 6 humpback whales and 30 minke whales are entangled annually in Scottish waters via pot fishing gear – the ropes that are used to link pots underwater and to marker buoys.

WDC has just successfully completed a pilot conservation project with help from crab and prawn fishermen to test ways to prevent these deaths, by replacing rope that naturally floats in large loops between pots (up to 60 pots in a line) with rope that sinks. Sinking rope creates fewer opportunities for

whales to become entangled, but WDC wanted to understand how fishermen felt about working with the rope and to see if using it presented any significant problems for fishermen.

Positive results mean that the project will be highly beneficial in addressing the conservation effects of entanglement on whales and other megafauna in Scotland's crab and prawn fisheries, making possible further engagement with Scotland's fishers and conservation authorities to significantly reduce the entanglement threat and potentially save the lives of 36 great whales around Scotland every year.

TIMELINE

August 2023

WDC advocacy win

At the Convention on Migratory Species scientific committee meeting, WDC secured 'Concerted Action' approval for Francisca and Lahille's dolphins and urged action to halt Baltic harbour porpoise decline.

September 2023

New IMMAs

WDC, with international experts, identified new Important Marine Mammal Areas (IMMAs) in the Southwest Atlantic, spanning the Guianas to Tierra del Fuego. They also addressed Baltic harbour porpoise conservation at ASCOBANS.

December 2023

Advancing animal conservation partnerships

At COP28, WDC collaborated with animal NGOs, including Climate Action Network, to integrate broader animal populations and ecosystems into climate discussions. They advocated for stronger ocean nature-based solutions and a cautious approach to ocean CDR technologies.

January 2024

Advocacy at Norwegian parliament

WDC held meetings at the Norwegian parliament with senior politicians, other allied organisations and activists aiming to advance change in Norway where more whales are killed by whalers each year than in Japan and Iceland combined.



Pictured above: Grey Whale. Credit: Christopher Swann

FUTURE PLANS

Over the next three years, WDC will focus on three key areas:

1. Safe Seas, addressing harms like pollution and vessel collisions, and advocating for cetacean habitat protection and innovative bycatch solutions.
2. In policy, WDC engages international bodies to integrate whales and dolphins into climate and biodiversity strategies, advancing research, protecting North Atlantic Right Whales and supporting citizen science.
3. WDC works to end hunting and captivity, engaging with the public and governments to create awareness and movement against hunting and seeking to strengthen international hunting bans.

WDC's efforts aim to ensure the well-being and conservation of whales and dolphins globally.

JOIN OUR COMMUNITY

Community-building plays a vital role in tackling the crises we face as a planet. To keep up momentum for our work – and bring our supporters together – we host regular in-person events and networking opportunities in London.

This year we featured some incredible speakers, including Jonathon Porritt, Prof Mike Berners-Lee and Claire Perry O'Neill. **Recent events include:**

JUNE 2023: OCEAN CHARITIES ARE GAME- CHANGERS

*Brown Rudnick LLP,
London*

Featuring:

- **Prof Rosalind Rickaby**
FRS: Head of Geology, Dept of Earth Sciences, University of Oxford
- **Clare Brook:** CEO, Blue Marine Foundation
- **Dr Judith Brown:**
Projects Director, Blue Marine Foundation

Watch: youtu.be/FPEEawrK-1s

NOVEMBER 2023: WHAT DOES COP ACCOMPLISH?

Brown Rudnick LLP, London

Featuring:

- **Claire Perry O'Neill (Keynote):** Former Minister for Energy and Clean Growth in the UK Cabinet and Minister of State for Climate of the UK
- **Adrian Gahan:**
Government Affairs Advisor, Blue Marine Foundation
- **Niki Mardas:** Executive Director, Global Canopy

Watch: youtu.be/bntYW3IvGFY

FEBRUARY 2024: CLOSER AND CLOSER TO 2071

*Simmons & Simmons LLP,
London*

Featuring:

- **Prof Chris Rapley**
CBE: Professor of Climate Science at University College London. Former Director of the Science Museum
- **Jonathon Porritt:**
Eminent writer and campaigner on sustainable development

Watch: youtu.be/GbgOzyrsAsI

Contact us to learn more about getting involved with our community:
info@globalreturnsproject.earth



THE GLOBAL RETURNS PROJECT

info@globalreturnsproject.earth

020 3488 5985

The Global Returns Project

makes it easy to take fast and highly effective action to mitigate climate change and reverse biodiversity loss.

We are a UK-registered charity selecting and assessing some of the world's highest impact climate and nature charities – *for you*.

